



8 WAYS TO ELEVATE YOUR SMILE



1. GO PPO. You can visit any licensed dentist under this plan, but you'll maximize plan value by taking advantage of our large PPO network. PPO network dentists have agreed to reduced contracted rates and can't "balance bill" you for additional fees.¹ Find a dentist at deltadentalins.com.²



2. SEEK PREVENTIVE CARE. Regular cleanings are a great way to keep your smile bright and may catch problems before more costly and extensive services are necessary. Your plan is designed to make preventive care affordable.



3. ACCESS ONLINE SERVICES. Create a free Online Services account to access plan information online anytime including benefits, eligibility, claims status, ID card, average procedure costs and more.

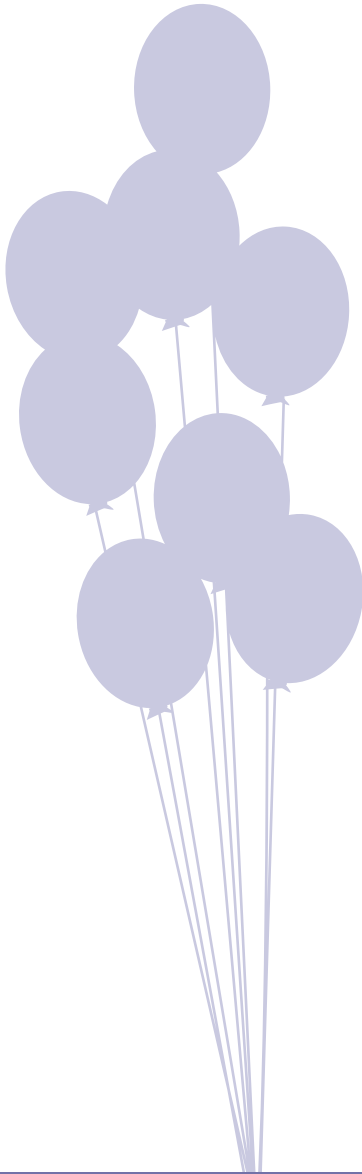


4. GO PAPERLESS. Receive an email notification when a new dental benefits statement is available online. Save time, reduce clutter and preserve environmental resources! To enroll: Log in to Online Services > Select "My Profile" > Choose "Online with E-Mail Alerts" as your document preference > Save.

GET THE MOST FROM
YOUR **DELTA DENTAL**
PPOSM PLAN

¹ Enrollees are responsible for any applicable deductibles, coinsurance, amounts over plan maximums and charges for non-covered services.

² Verify that your dentist is a contracted Delta Dental PPO network dentist before each appointment.



5. GET MOBILE. Visit deltadentalins.com on your smartphone to access mobile-optimized Online Services – including a helpful dentist locator tool – on the go. Or, download the Delta Dental app through the App Store or Google Play to access your plan information and try out our toothbrush timer.



6. COORDINATE BENEFITS. Are you covered under another dental plan as well? Ask your dentist to include information about both plans with your claim, and we'll handle the rest.³



7. TALK TO YOUR DENTIST. From pregnancy to diabetes, medical conditions can affect your oral health. Start each dental checkup with a quick chat about your overall health.



8. STAY INFORMED. Get tools and tips to keep your smile bright at our SmileWay® Wellness site (mysmileway.com). And, subscribe to *Grin!*, our free dental health e-newsletter.

³ Group- and state-specific exceptions may apply. Please review your plan booklet for details about your plan's coordination of benefits, including rules for determining primary and secondary coverage.

LEGAL NOTICES

Access federal and state legal notices related to your plan:
deltadentalins.com/about/legal/index-enrollee.html

Delta Dental PPOSM is underwritten by Delta Dental Insurance Company in AL, DC, FL, GA, LA, MS, MT, NV and UT and by not-for-profit dental service companies in these states: CA – Delta Dental of California; PA, MD – Delta Dental of Pennsylvania; NY – Delta Dental of New York, Inc.; DE – Delta Dental of Delaware, Inc.; WV – Delta Dental of West Virginia, Inc. In Texas, Delta Dental Insurance Company provides a Dental Provider Organization (DPO) plan.

Delta Dental of California, Delta Dental of Pennsylvania and Delta Dental Insurance Company, together with our affiliate companies and Delta Dental of New York, are members, or affiliates of members, of the Delta Dental Plans Association, a network of 39 Delta Dental companies that together provide dental coverage to more than 60 million people in the U.S.

CONTACT US

Online assistance:

For quick and easy online assistance, go to deltadentalins.com > Contact Us, then select the administering company and choose the applicable customer service form.

Telephone assistance:

Delta Dental of California: **800-765-6003**

California School District Employees: **866-499-3001**

Delta Dental of Delaware; Delta Dental of the District of Columbia; Delta Dental of New York; Delta Dental of Pennsylvania (and Maryland); Delta Dental of West Virginia: **800-932-0783**

Delta Dental Insurance Company (Alabama, Florida, Georgia, Louisiana, Mississippi, Montana, Nevada, Texas, Utah): **800-521-2651**

