

Autism doesn't have to be puzzling

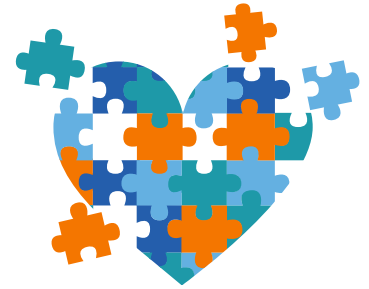
We'll help you figure it out



The Autism Spectrum Disorders (ASD) program — here for your family

When your child falls somewhere on the Autism Spectrum, you've got a team in your corner, ready to help. Our Autism Spectrum Disorders (ASD) program is here for your whole family, creating a strong care system. We'll help you:

- Strengthen the family unit and make it easier to understand how to use available care.
- Guide your whole family through the health care system.
- Use your benefits effectively to get the best outcomes.



What the ASD program can do for you

Community resources and family support

The ASD program team helps:

- Connect you to the resources and knowledge that build a strong foundation of care.
- Tailor referrals and education to meet your family's needs.
- Give you and your family ongoing support so you can overcome obstacles and add new services.
- Make it easier to reach your family's lifestyle and health goals.

Coordinated care

ASD case managers help you:

- Navigate the complex health care system.
- Address unique challenges of your situation.
- Build a custom care plan for your child.
- Find available services and connect you to any missing care.
- Link your child's treatment providers together for better collaboration.

Clinical review of Applied Behavior Analysis

We'll help tackle the tough stuff:

- A highly trained team of clinicians, experienced with families touched by ASD, works hard to make sure your child gets the right care from the right provider at the right time.



We can help

Call the ASD program team at 1-844-269-0538.